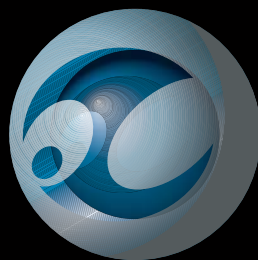


O C I T H E R A P E U T I C S



*ClearWay*TM **RX**

O C I T H E R A P E U T I C S

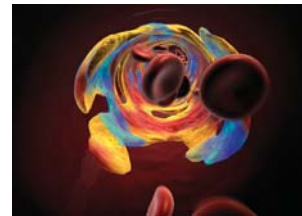
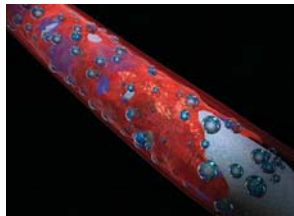
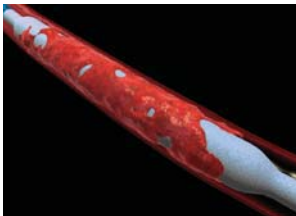


CLEARWAY RX

OCI THERAPEUTICS

OCCCLUSION CONTAINMENT INFUSION

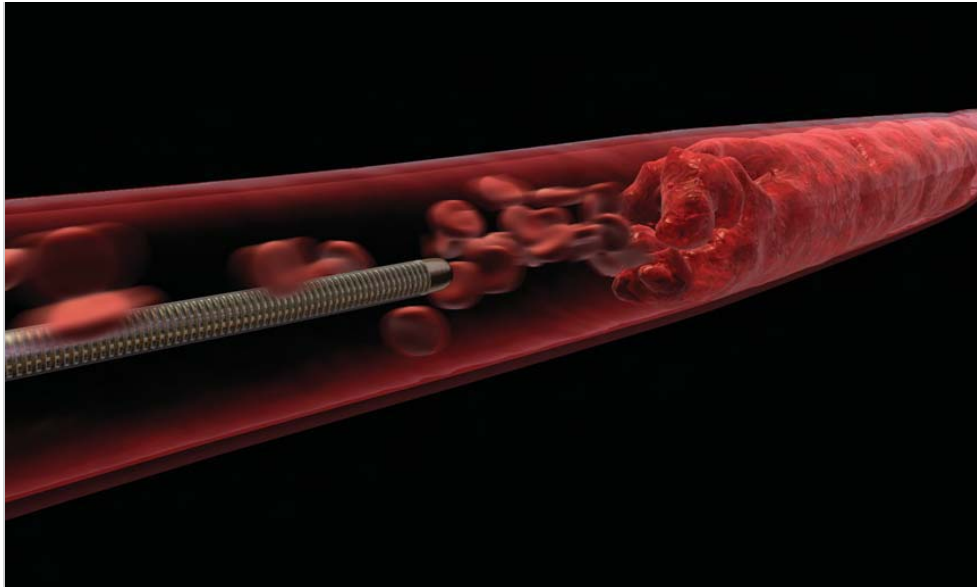
ClearWay RX is the name for a brand new atraumatic delivery methodology to enhance localized drug bioavailability and uptake without dilution loss to general systemic circulation. This is accomplished by an extraordinarily thin, microporous PTFE balloon which controllably engages the vessel wall to occlude blood flow during infusion. By limiting flow during infusion, drug concentration to the targeted location can increase upwards of 100X or more over IV infusion. This procedure is referred to as OCI therapeutics (Occlusion, Containment, Infusion).

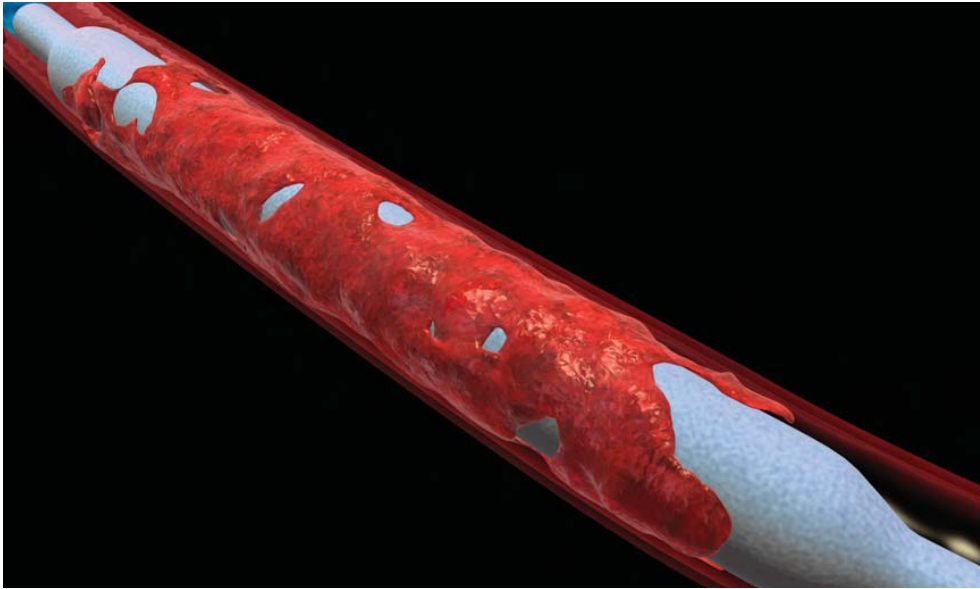


CLEARWAY RX

BENEFITS OF LOCALIZED INFUSION

Localized infusion of a therapeutic agent offers several treatment options which cannot always be safely achieved with standard systemic doses or non-occluding catheter delivery methods. ClearWay's patented atraumatic microporous balloon infuses medication at low pressure (1-4 ATM) without additional injury to the vascular wall. ClearWay's occluding delivery system infuses across the entire treatment zone, maximizing the drug availability and uptake within a controlled area during infusion. OCI is a more efficient means to employ local drug delivery in a wide variety of coronary or peripheral interventions which could benefit from a localized treatment effect.





CLEARWAY RX

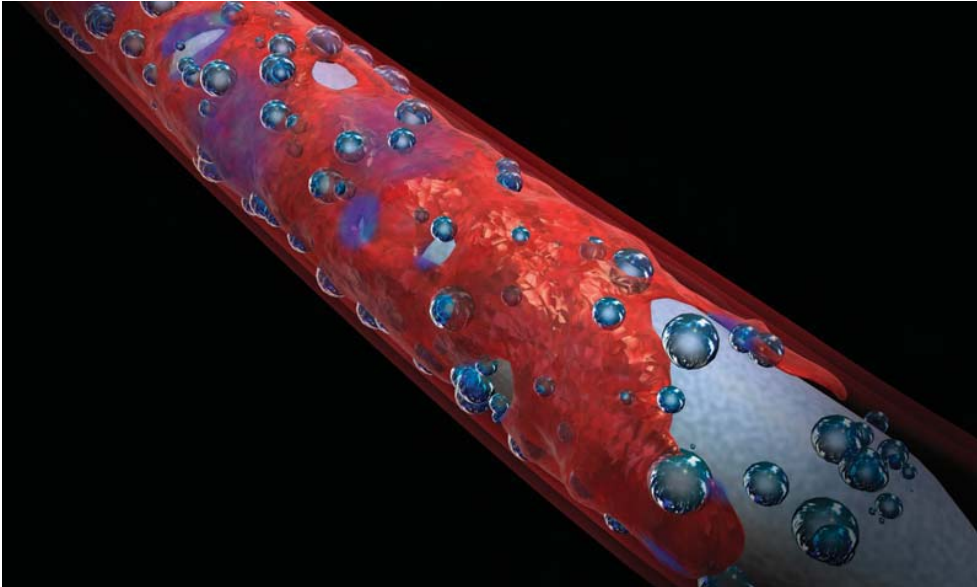
OCCLUSION

ClearWay's OCI therapeutic platform combines 3 procedures in 1 with Occlusion, Containment and Infusion. OCI delivery allows for a prescribed amount of drug to be infused into a targeted area for a desired therapeutic effect. During inflation, drug is being infused through the microporous balloon pores while blood flow is occluded maximizing drug availability without substantial dilution by the systemic circulation. Non-occluding local delivery methods result in the immediate release of drugs into the general systemic circulation, often into the aorta and into other non-targeted vessel locations.

CLEARWAY RX

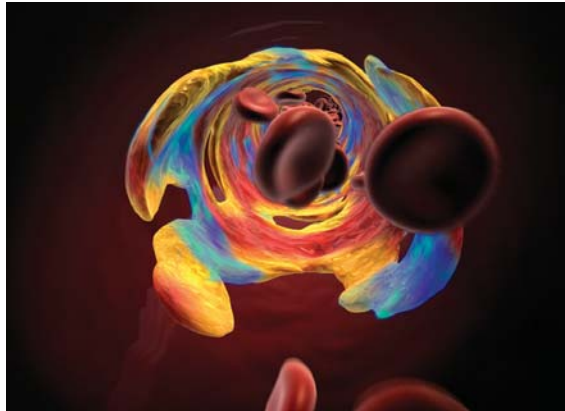
CONTAINMENT

Once the ClearWay™ RX balloon is inflated, containment of the treatment zone provides extended residence time to help local drug bioavailability, concentration and dose, for an enhanced therapeutic effect. Localized drug administration with OCI provides a higher concentration for a wide variety of locally effective medications, significantly improving the therapeutic effect compared to other non-occluding catheter delivery systems or standard IV medication methods.



CLEARWAY RX

INFUSION



Controlled infusion at 1-4 ATM throughout the entire length of the targeted treatment zone provides increased residence time and uptake for a preferred localized therapeutic effect during and after OCI catheter treatment.

CLEARWAY RX



IntraCoronary OCI delivery with ClearWay™ RX provides a higher concentration of drug for enhanced bioavailability and residence time without significant systemic dilution.



Within seconds following conventional IntraCoronary (IC) infusion, medication becomes diffused, is lost to adjacent vessels, and rapidly dilutes with minimal residence time into the general systemic circulation.



ClearWay™ RX Size / Ordering Information

		20 mm Balloon Length
Balloon Diameter (mm)	1.0	80202
	1.5	80208
	2.0	80214
	2.5	80220
	3.0	80232
	3.5	80244
	4.0	80250

- .014" Guidewire
- 6 & 7 Fr Guide Catheter
- 4 & 5 Fr Introducer Sheath
- 1-4 ATM Infusion Pressure
- 134 cm Catheter Working Length
- Additional Balloon Lengths Pending
- World's First Rapid Exchange OCI Catheter Platform Suitable for Coronary and Peripheral Applications



ATRIUM MEDICAL CORPORATION

5 Wentworth Drive
Hudson, New Hampshire 03051 U.S.A.
☎ 603-880-1433 📠 603-880-6718

ATRIUM EUROPE B.V.

Rendementsweg 20 B
3641 SL Mijdrecht, The Netherlands
☎ +31-297-230-420 📠 +31-297-282-653

ATRIUM AUSTRALIA-PACIFIC RIM PTY. LTD.

L 1 Bridgepoint, 3 Brady Street
Mosman NSW 2088 Australia
☎ +61-2-9960-0169 📠 +61-2-8969-2735

Atrium® © Atrium Medical Corporation 2007. All rights reserved. Printed in U.S.A. 10/07 Part #0079B
Atrium and ClearWay RX are trademarks of Atrium Medical Corporation.
This device is covered under the following U.S. patent: 6395208B1. Additional patents pending.

www.atriummed.com